



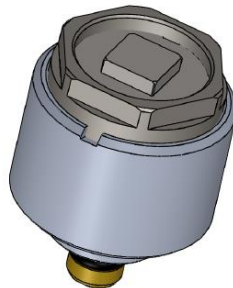
*Market Leader In Accuracy*

**Welcome to Huma-Air. We design and manufacture brand- and model specific precision regulators for PCP air rifles.**

---

By using only the highest quality materials such as aircraft grade aluminum, aluminum-bronze, chrome-moly steel and precision belleville springs, our ultra-compact regulators are high performing with less than 1% fluctuation.

**Regulator installation Guideline Huma-Air Raptor Regulator for Edgun Leshiy**



For adjustment tips, frequently asked questions and a complete list of installation manuals and instructions on how to adjust your Huma-Air regulator

<https://www.huma-air.com/Fitting-instructions>



Or go there directly by scanning the QR code

**Before you start, realize this:**

- Working on a high pressure rifle could potentially be harmful or lethal to you or bystanders if you do not know what you are doing.
- The pictures of the rifle parts in this guideline can be universal and meant as an example to explain the working principle. They might not be equal to the parts in your rifle.
- Do not attempt to install this regulator yourself if you do not have a clear understanding of how these pcp rifles and regulators work.
- Do not attempt to install this regulator if you are not skilled to work on an air rifle; contact your local gunsmith to do the fitting.
- Installation and operation is done completely at your own risk.
- Installing this regulator might void your rifle's factory warranty.
- Your rifle may never be filled higher in pressure as stated in your rifle's manual.
- Do not attempt to fit this regulator in another rifle as mentioned in our order conformation.
- These regulators are not suitable to use as a CO2 to HPA conversion, this could potentially be harmful or lethal to you or bystanders.
- We cannot be held liable for any accidents in relation to this regulator and its installation.

**Before you start, make sure that the rifle is unloaded, remove the magazine and make absolutely sure ALL the air is drained from the pressure tube. If there is a pressure gauge, it will give you just an indication. Follow the manufactures instructions for depressurizing and double check to make sure all the air is out of the rifle**

**If the regulator is fitted and there is no output pressure after filling the pressure tube, something might be wrong causing the airflow to block totally.**

**Please beware even though there is no output pressure, the pressure tube is fully charged with high pressure air!!**

**If you are not able to relieve the pressure of the pressure tube according to the manufacture instructions or by dry firing the rifle then:**

**Contact a professional gunsmith to retrieve a solution!**

- **DO NOT** try to unscrew or to open the pressure tube in any way.
- **DO NOT** try to pierce/drill or to use force to open the pressure tube or unscrew parts in an attempt to relieve the blocked pressure.
- **These actions can cause serious injury or death to you or bystanders**

Please note that to be able to show better details the pictures are of the aluminium parts of the regulator in the white. Your parts will be anodise black.

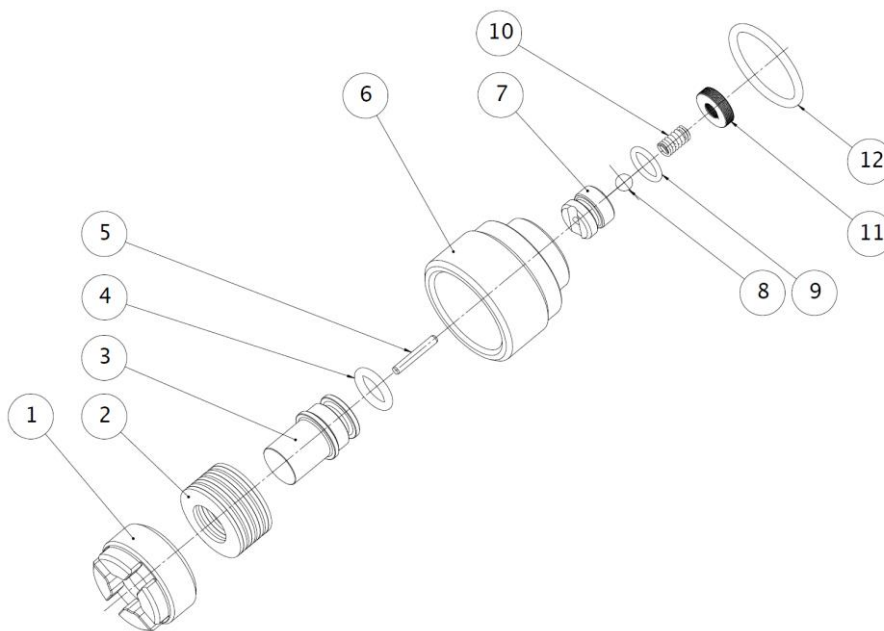
Loosen the small grub screw using a 2mm hex key from the valveblock untill you hear air escaping



Make sure that all air is drained by checking the gauge first and then try and dryfire the Epic 2 to make sure it is completely empty.

Once completely empty unscrew the plenum tube from the reservoir and valveblock so you have a compact item to work on

Remove the OEM regulator from the adapter



To remove the Brass lock nut you can use a circlip plier, but best is off coarse to make a fitting tool.



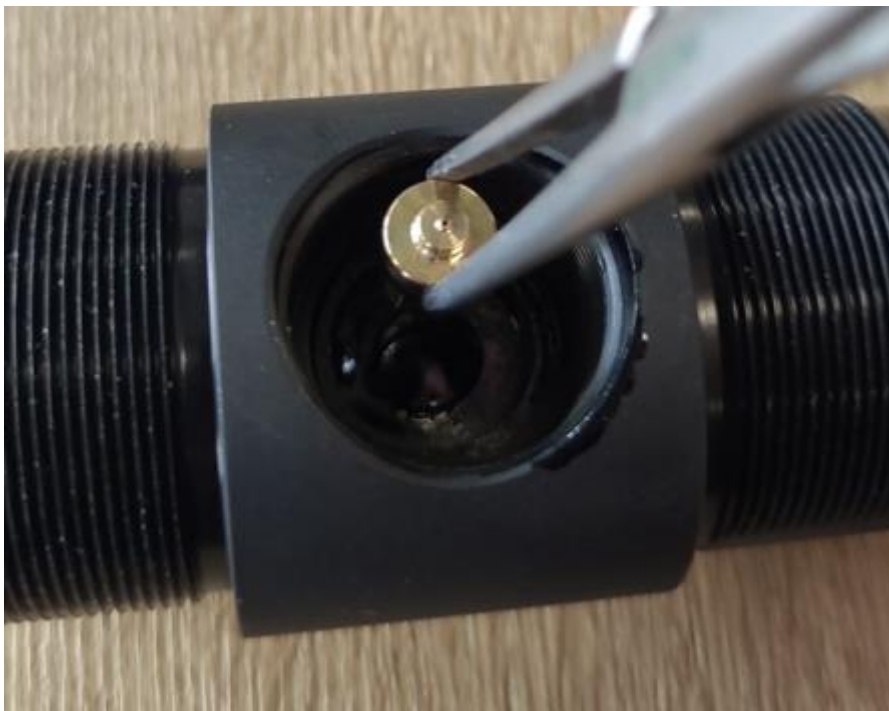
With all parts removed your adapter will look like this. Clean it thoroughly.



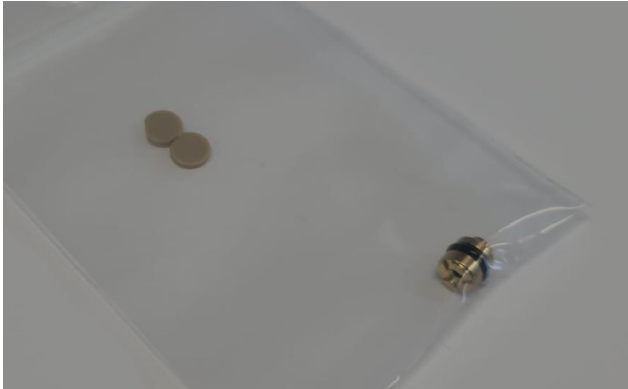
Now apply silicone grease to all the O-ring mating surfaces.



Then insert the nozzle

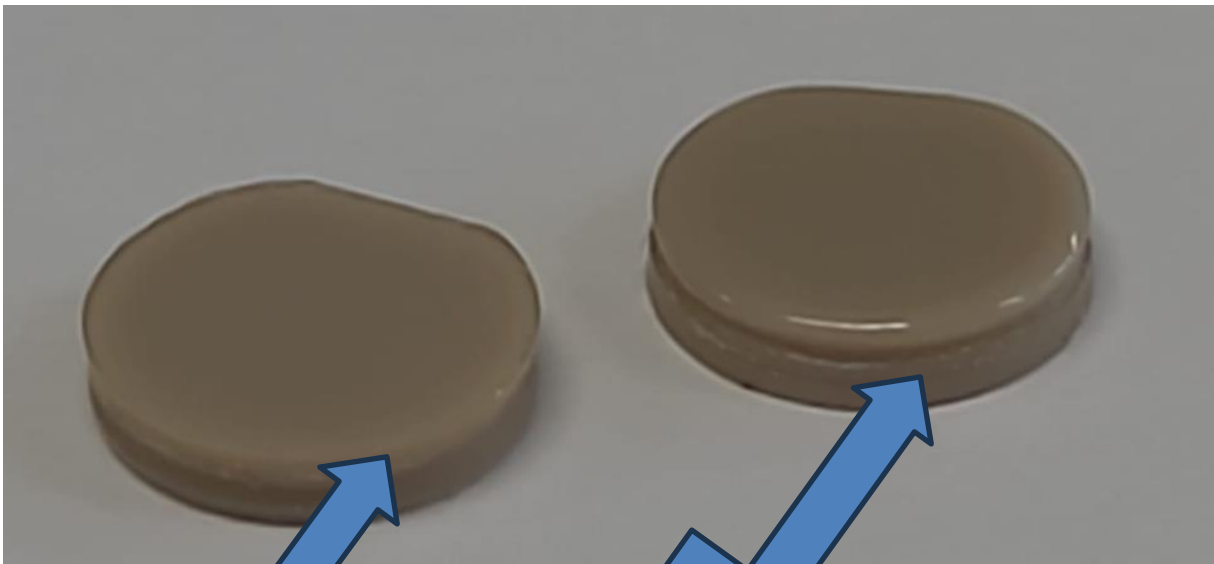


The replacement regulator comes partly assembled and consists of a small nozzle packed in a separate bag. The big lock nut keeping it in place with a piston subassembly screwn into said locknut and a separately packed tan valvediscs.



The discs has one sharp side and one side with rounded edges. The side with the rounded edges should face the nozzle and the side with the sharp edge should rest on the piston.

Left disc has the sharp edge facing upward, right disc has the ronded edge facing upward.



Side with sharp edge should face  
the piston

Side with rounded edge should face  
the nozzle

Unscrew the piston subassembly from the locknut so you can start assembling the parts together. They are temporarily assembled by us to protect them during transport. Most times the valvedisc will stick to the piston as can be seen in the picture. But if it falls off be sure to assemble it in the same orientatie as it was as delivered.





Now carefully lay the nozzle in it's seat. It will rest on the o-ring . Using your finger push it down until it is fully seated. After installation it should look like this



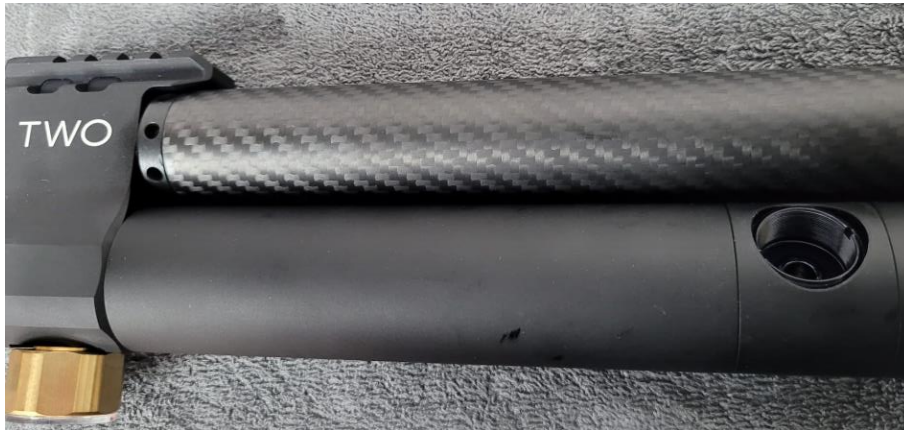
Now it's time to screw the locknut to secure the nozzle securely. Start using your fingers, Once you feel oring resistance switch over to a coin. €0,05 fits nicely. Use a coin that is less than 22mm Ø. And less than 2mm wide. The slot is 2.2mm wide. We do however offer a Raptor tool that is a perfect fit and we recommend using that!

<https://huma-air.com/huma-air-raptor-regulator-assembling-tool-for-edgun-leshiy-2/>





Make sure the lock nut is fully seated. After that Align the regulator with the barrel and your stock so it is accessible once everything is assembled.



Insert the valvedisc in the bore or using a little silicone grease on the piston face “glue it on the piston” then you can commence to screw in the complete subassembly.



Then insert the piston subassembly in the locknut and screw it down until you feel resistance! Do not force the subassembly as this may damage the valvedisc. The other side of the raptor tool has the fitting hex connection.



This concludes the assembly. Once you pressurize the gun. Check for leaks and slowly increase pressure to your desired level by turning the Stainless Hex connector.

Only thing to do now is go out shooting and enjoy your HuMa regulated Epic Two