



*Market Leader In Accuracy*

**Welcome to Huma-Air. We design and manufacture brand- and model specific precision regulators for PCP air rifles.**

---

By using only the highest quality materials such as aircraft grade aluminum, aluminum-bronze, chrome-moly steel and precision belleville springs, our ultra-compact regulators are high performing.

**How to alter the front support to install the Airmarksman to an Impact M4**

**HUMA-AIR**



For adjustment tips, frequently asked questions and a complete list of installation manuals and instructions on how to adjust your Huma-Air regulator

<https://www.huma-air.com/Fitting-instructions>



Or go there directly by scanning the QR code

**Before you start, realize this:**

- Working on a high pressure rifle could potentially be harmful or lethal to you or bystanders if you do not know what you are doing.
- The pictures of the rifle parts in this manual are universal and used as an example to explain the working principle. They might not be equal to the parts in your rifle.
- Do not attempt to install this regulator yourself if you do not have a clear understanding of how these pcp rifles and regulators work.
- Do not attempt to install this regulator if you are not skilled to work on an air rifle; contact your local gunsmith to do the fitting.
- Installation and operation is done completely at your own risk.
- Installing this regulator might void your rifle's factory warranty.
- Your rifle may never be filled higher in pressure as stated in your rifle's manual.
- Do not attempt to fit this regulator in another rifle as mentioned in our order confirmation.
- These regulators are not suitable to use as a CO2 to HPA conversion, this could potentially be harmful or lethal to you or bystanders.
- We cannot be held liable for any accidents in relation to this regulator and its installation.

**Before you start, make sure that the rifle is unloaded, remove the magazine and make absolutely sure ALL the air is drained from the pressure tube. If there is a pressure gauge, it will give you just an indication. Dry fire the rifle or follow the manufacturer's instructions and double check to make sure all the air is out of the rifle**



**If the regulator is fitted and there is no output pressure after filling the pressure tube, something might be wrong causing the airflow to block totally.**

**Please beware even though there is no output pressure, the pressure tube/bottle is fully charged with high pressure air!!**

**If you are not able to relieve the pressure of the pressure tube according to the manufacturer's instructions or by dry firing the rifle then:**

**Contact a professional gunsmith to retrieve a solution!**

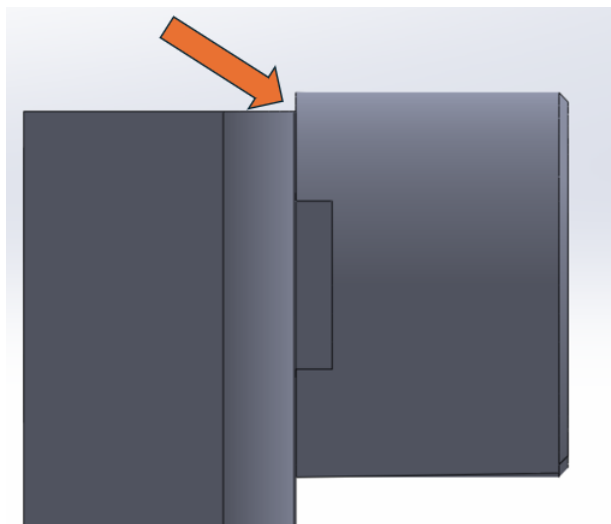
- **DO NOT try to unscrew or to open the pressure tube in any way.**
- **DO NOT try to pierce/drill or to use force to open the pressure tube or unscrew parts in an attempt to relieve the blocked pressure.**
- **These actions can cause serious injury or death to you or bystanders**

Before you start, we would like to advise you to read our manual how to [read and adjust the regulator pressure](#) and our [General Adjustment Tips](#) to set up your rifle perfect.

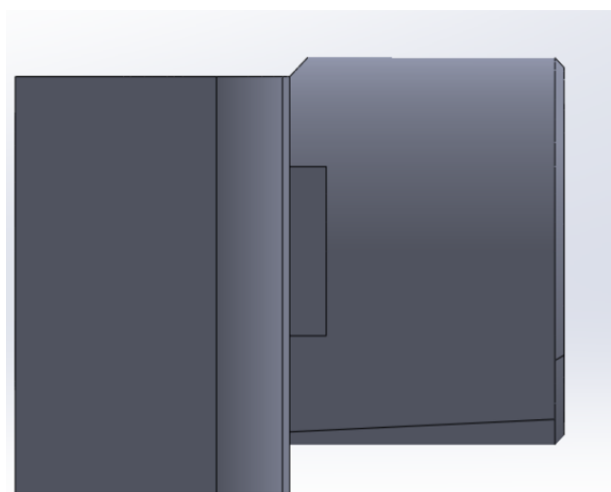
In order to be able to install the Airmarksman Backbone rail to a M4 you will need to slightly alter the front support.

For most of the installation you can simply follow the Airmarksman instructions.

But as standard the FX Impact M4 front support has a sharp corner that will need to be bevelled



Above you can see the corner that will interfere with with the Backbone.



Here is a picture of how the front support needs to be beveled.

In real life this will look like the below picture. Using a black sharpy or more dedicated aluminium black will create a finish that almost matches the original. The alteration will however be hardly noticable anyway.



And once mounted this will give you the clearance needed.



Some sources suggest milling the backbone rail. This will however require the use of expensive equipment. The alteration in this document can be carried out with a couple of strokes of a file. Which should be straightforward for almost everyone.